



CHERIE  
BERGER  
TEAM

April 2025

# Green Brook Market Insights

CHERIE BERGER TEAM

## Market Profile & Trends Overview

The table belows shows data & statistics for April 2025 (CM), and the percentage difference of these metrics compared to data from last month (LM), the last three months (L3M), the same month last year (PYM), the entire last year (LY), prior year (PY), year-to-date (YTD), and the prior year-to-date (PYTD).

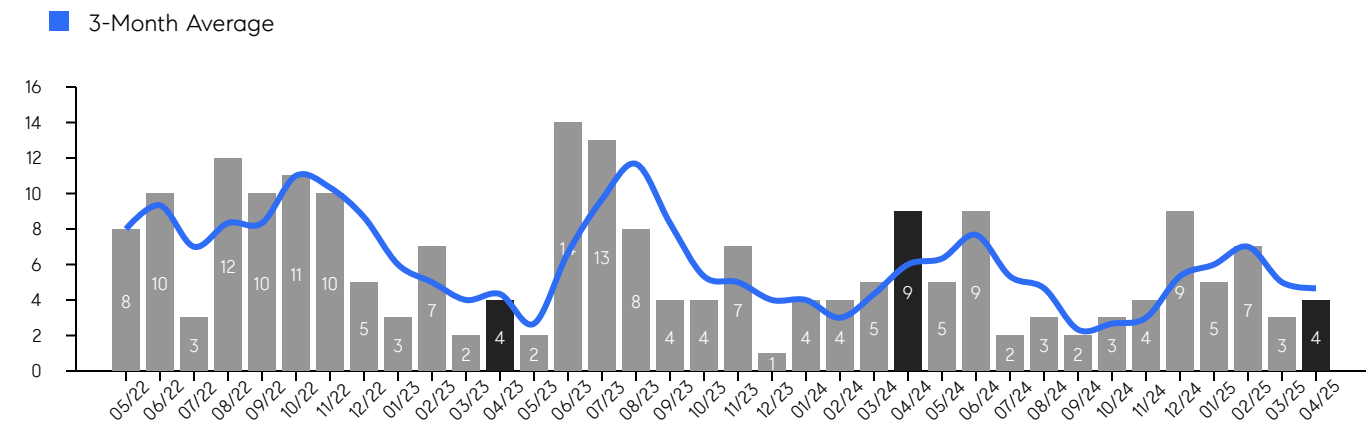
		CM	LM	L3M	PYM	LY	PY	YTD	PYTD
Inventory	# OF PROPERTIES	16	78%	60%	300%	75%	116%	-	-
	MEDIAN PRICE	\$649,900	24%	9%	20%	-24%	-3%	-	-
	AVERAGE PRICE	\$901,412	20%	9%	54%	-8%	13%	-	-
	PRICE PER SQFT	\$306	8%	-1%	0%	-2%	5%	-	-
	MONTHS OF SUPPLY	4.0	33%	84%	800%	-64%	90%	-	-
New Listings	# OF PROPERTIES	15	114%	114%	275%	125%	140%	36	38.5%
	MEDIAN PRICE	\$775,000	-2%	26%	38%	17%	27%	\$732,000	6.5%
	AVERAGE PRICE	\$964,040	3%	23%	67%	18%	42%	\$859,918	14.0%
	PRICE PER SQFT	\$331	24%	5%	0%	21%	38%	\$326	19.0%
Sales	# OF PROPERTIES	4	33%	-20%	-56%	-19%	-30%	19	18.8%
	MEDIAN PRICE	\$820,000	100%	76%	53%	32%	28%	\$507,000	-24.4%
	AVERAGE PRICE	\$896,250	60%	31%	18%	32%	31%	\$758,792	8.5%
	PRICE PER SQFT	\$256	-14%	-26%	-26%	15%	11%	\$324	37.9%
	SALE-TO-LIST RATIO	101.3%	-7.9%	-5%	-2.0%	-3.0%	-0.6%	104.5%	5.0%

# Green Brook

APRIL 2025

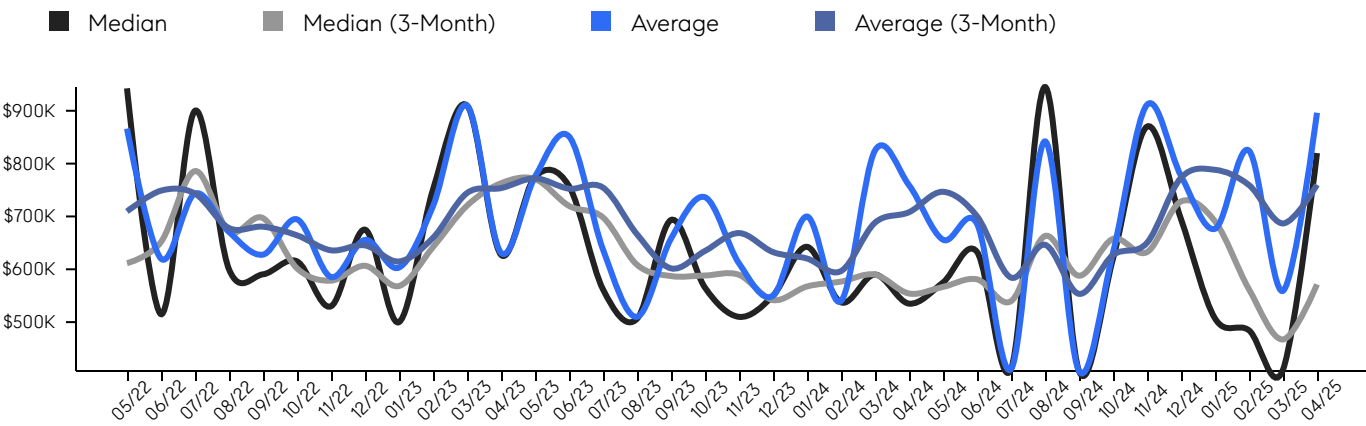
## Property Sales

There were 4 sales in April 2025, a change of -56% from 9 in April 2024 and 33% from the 3 sales last month. Compared to April 2023 and 2024, sales were at a similar level. There have been 19 year-to-date (YTD) sales, which is 18.8% higher than last year's year-to-date sales of 16.



## Property Prices

The median sales price in April 2025 was \$820,000, a change of 53% from \$535,000 in April 2024, and a change of 100% from \$410,000 last month. The average sales price in April 2025 was \$896,250, a change of 18% from \$759,222 in April 2024, and a change of 60% from \$559,216 last month, and was at its highest level compared to 2024 and 2023.



© 2025. Based on information from Garden State MLS, LLC for the period of January 2018 through April 2025. Due to MLS reporting methods and allowable reporting policy, this data is only informational and may not be completely accurate. Data maintained by the MLS may not reflect all real estate activity in the market.

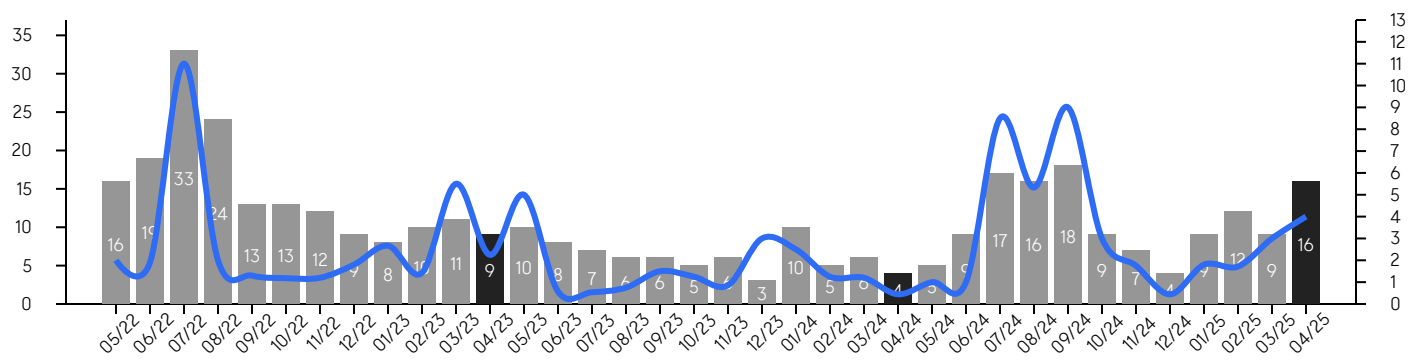
# Green Brook

APRIL 2025

## Inventory & MSI

The total inventory of properties available for sale as of April 2025 was 16, a difference of 78% from - last month, and 300% from 4 in April 2024, and was at its highest level compared to 2024 and 2023. The months of supply inventory (MSI) was at 4.0 months, a similar level compared to 2024 and 2023. A comparatively lower MSI benefits sellers, while a higher MSI benefits buyers.

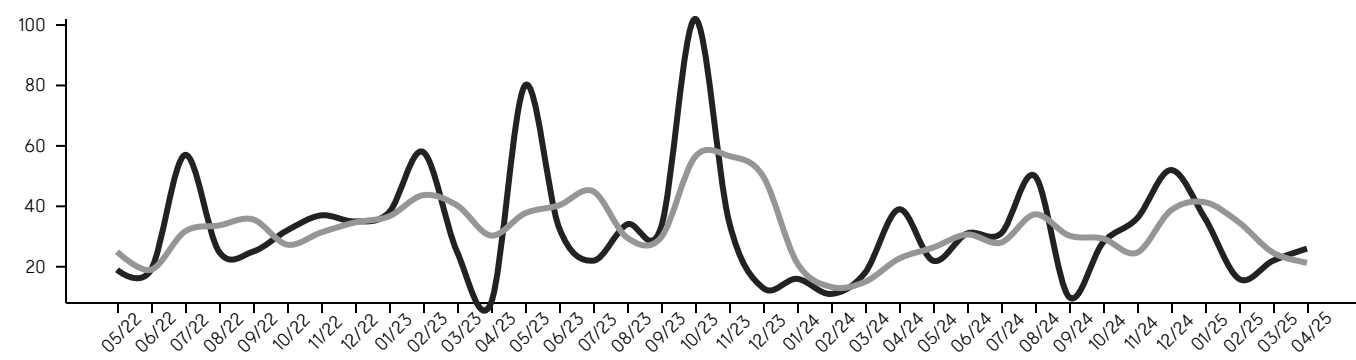
■ MSI



## Market Time

The average days on market (DOM) shows the number of days the average property is on the market before selling. An upward trend tends to indicate a move towards a buyer's market, while a downward trend tends to indicate a move to a seller's market. The DOM for April 2025 was 26, a change of 18% from 22 days last month, and -33% from 39 days in April 2024, and was at its lowest level compared to 2024 and 2023.

■ Average      ■ Average (3-Month)



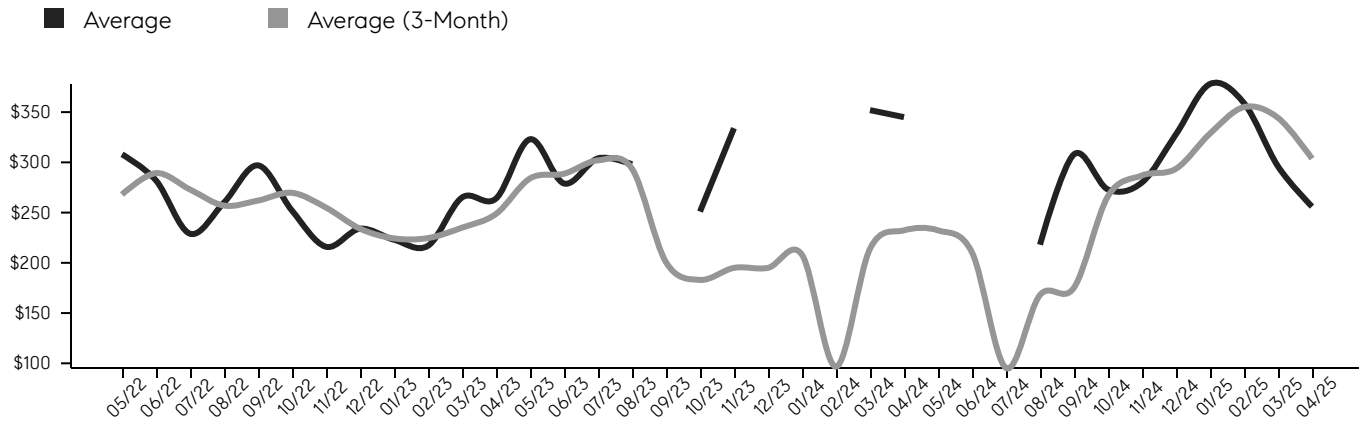
© 2025. Based on information from Garden State MLS, LLC for the period of January 2018 through April 2025. Due to MLS reporting methods and allowable reporting policy, this data is only informational and may not be completely accurate. Data maintained by the MLS may not reflect all real estate activity in the market.

# Green Brook

APRIL 2025

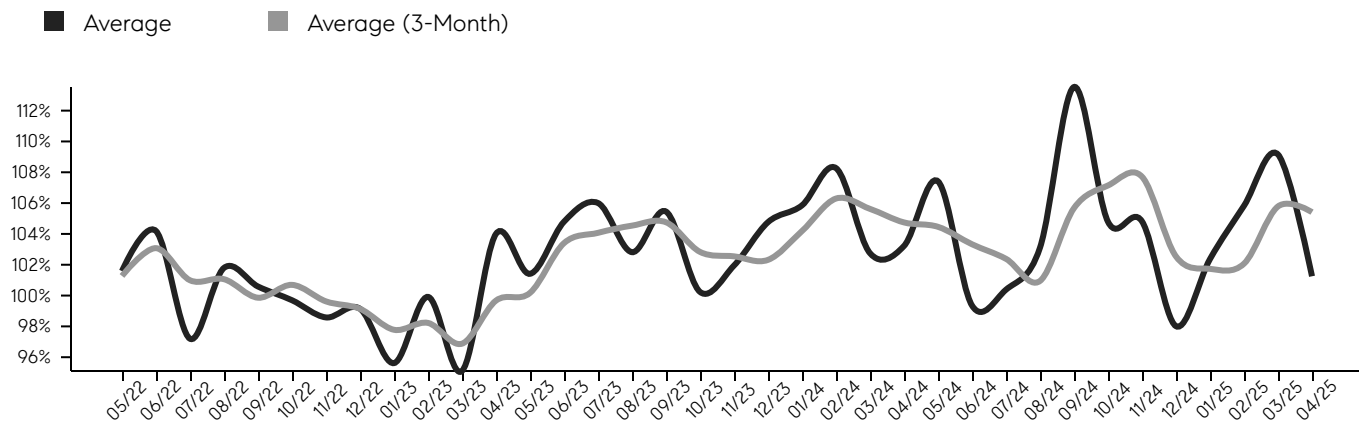
## Selling Price Per Square Foot

The selling price per square foot (PPSF) is a great indicator for the direction of property values. Since median & average sales prices can be impacted by the "mix" of high or low end properties in the market, the selling price per square foot is a more normalized indicator on the direction of property values.



## Selling Price vs. Listing Price

The selling price vs. listing price reveals the average amount that sellers are agreeing to come down from their list price. The lower the ratio is below 100%, the more of a buyer's market exists, while a ratio at or above 100% indicates more of a seller's market. The April 2025 selling price vs. listing price ratio was 101.3%, compared to 109.2% last month, and 103.2% in April 2024.



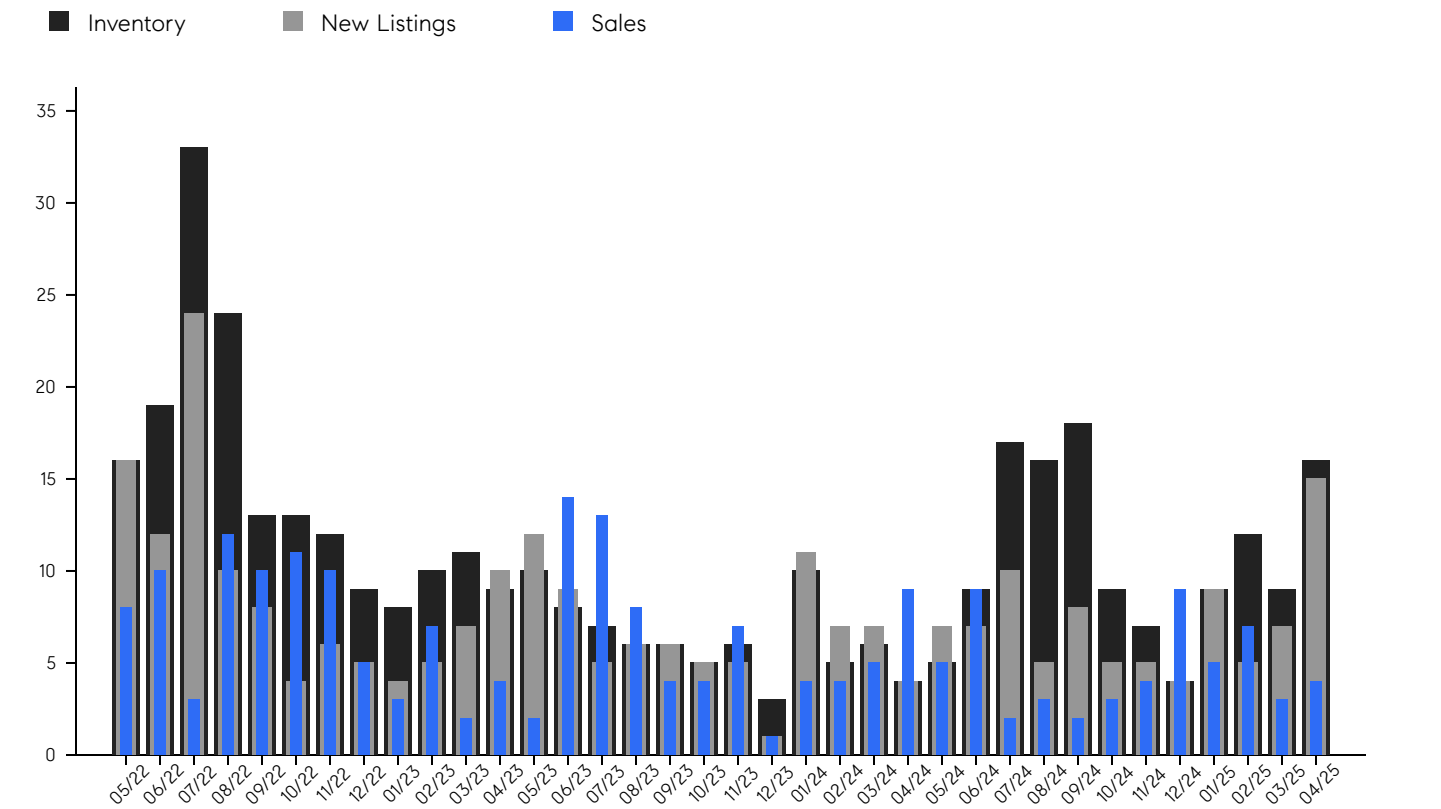
© 2025. Based on information from Garden State MLS, LLC for the period of January 2018 through April 2025. Due to MLS reporting methods and allowable reporting policy, this data is only informational and may not be completely accurate. Data maintained by the MLS may not reflect all real estate activity in the market.

# Green Brook

APRIL 2025

## Inventory, New Listings & Sales

This last view of the market combines monthly inventory of properties for sale along with new listings and sales. The graph shows the basic annual seasonality of the market, as well as the relationship between these items. The number of new listings in April 2025 was 15, a change of 114% from 7 last month and 275% from 4 in April 2024.



© 2025. Based on information from Garden State MLS, LLC for the period of January 2018 through April 2025. Due to MLS reporting methods and allowable reporting policy, this data is only informational and may not be completely accurate. Data maintained by the MLS may not reflect all real estate activity in the market.

## Green Brook

APRIL 2025

MONTH	# OF SALES	3-MO AVG	MEDIAN SALE PRICE	3-MO AVG	AVERAGE SALE PRICE	3-MO AVG	DAYS ON MARKET	3-MO AVG	AVERAGE PPSF	3-MO AVG	SALE /LIST	3-MO AVG	INV	NEW LISTINGS	MSI
Apr '25	4	5	\$820K	\$572K	\$896K	\$760K	26	21	\$256	\$304	101.3%	105.4%	16	15	4.0
Mar '25	3	5	\$410K	\$467K	\$559K	\$687K	22	25	\$296	\$344	109.2%	105.8%	9	7	3.0
Feb '25	7	7	\$484K	\$562K	\$824K	\$759K	16	35	\$359	\$355	105.8%	102.1%	12	5	1.7
Jan '25	5	6	\$507K	\$691K	\$676K	\$788K	36	41	\$378	\$329	102.4%	101.7%	9	9	1.8
Dec '24	9	5	\$695K	\$728K	\$776K	\$773K	52	39	\$328	\$294	98.0%	102.5%	4	4	0.4
Nov '24	4	3	\$870K	\$633K	\$911K	\$650K	36	25	\$280	\$287	104.8%	107.7%	7	5	1.8
Oct '24	3	3	\$620K	\$658K	\$631K	\$627K	28	29	\$273	\$266	104.8%	107.1%	9	5	3.0
Sep '24	2	2	\$407K	\$588K	\$407K	\$554K	10	30	\$308	\$175	113.5%	105.7%	18	8	9.0
Aug '24	3	5	\$945K	\$663K	\$842K	\$646K	50	37	\$218	\$168	103.1%	100.9%	16	5	5.3
Jul '24	2	5	\$411K	\$540K	\$411K	\$584K	31	28	\$0	\$95	100.4%	102.4%	17	10	8.5
Jun '24	9	8	\$633K	\$581K	\$686K	\$700K	31	31	\$286	\$210	99.4%	103.3%	9	7	1.0
May '24	5	6	\$575K	\$567K	\$656K	\$747K	22	26	\$0	\$232	107.4%	104.5%	5	7	1.0
Apr '24	9	6	\$535K	\$554K	\$759K	\$708K	39	23	\$345	\$232	103.2%	104.7%	4	4	0.4
Mar '24	5	4	\$590K	\$590K	\$824K	\$688K	18	15	\$352	\$214	102.8%	105.6%	6	7	1.2
Feb '24	4	3	\$537K	\$577K	\$540K	\$597K	11	13	\$0	\$97	108.3%	106.3%	5	7	1.3
Jan '24	4	4	\$642K	\$568K	\$699K	\$620K	16	21	\$290	\$208	105.9%	104.2%	10	11	2.5
Dec '23	1	4	\$550K	\$542K	\$550K	\$633K	13	50	\$0	\$195	104.8%	102.3%	3	1	3.0
Nov '23	7	5	\$510K	\$590K	\$611K	\$669K	35	57	\$334	\$195	101.9%	102.5%	6	5	0.9
Oct '23	4	5	\$565K	\$588K	\$736K	\$635K	102	56	\$251	\$183	100.2%	102.8%	5	5	1.3
Sep '23	4	8	\$693K	\$587K	\$657K	\$602K	33	30	\$0	\$201	105.5%	104.8%	6	6	1.5
Aug '23	8	12	\$506K	\$609K	\$510K	\$666K	34	30	\$298	\$294	102.8%	104.5%	6	6	0.8
Jul '23	13	10	\$562K	\$698K	\$637K	\$755K	22	45	\$304	\$302	106.0%	104.1%	7	5	0.5
Jun '23	14	7	\$757K	\$720K	\$851K	\$753K	33	40	\$279	\$289	104.8%	103.4%	8	9	0.6
May '23	2	3	\$775K	\$771K	\$775K	\$772K	80	38	\$323	\$284	101.4%	100.2%	10	12	5.0
Apr '23	4	4	\$627K	\$763K	\$631K	\$754K	8	30	\$264	\$249	104.0%	99.7%	9	10	2.3
Mar '23	2	4	\$910K	\$720K	\$910K	\$744K	25	40	\$265	\$235	95.1%	96.9%	11	7	5.5
Feb '23	7	5	\$751K	\$642K	\$719K	\$660K	58	44	\$217	\$225	99.9%	98.2%	10	5	1.4
Jan '23	3	6	\$500K	\$568K	\$603K	\$615K	38	37	\$223	\$224	95.6%	97.8%	8	4	2.7
Dec '22	5	9	\$675K	\$607K	\$655K	\$645K	35	35	\$234	\$234	99.1%	99.1%	9	5	1.8
Nov '22	10	10	\$530K	\$579K	\$585K	\$636K	37	31	\$216	\$255	98.6%	99.6%	12	6	1.2
Oct '22	11	11	\$615K	\$602K	\$694K	\$664K	32	27	\$252	\$270	99.7%	100.7%	13	4	1.2
Sep '22	10	8	\$590K	\$697K	\$627K	\$681K	25	36	\$297	\$262	100.6%	99.9%	13	8	1.3
Aug '22	12	8	\$600K	\$672K	\$670K	\$678K	25	34	\$260	\$257	101.8%	101.1%	24	10	2.0
Jul '22	3	7	\$900K	\$786K	\$743K	\$743K	57	32	\$229	\$273	97.2%	101.0%	33	24	11.0
Jun '22	10	9	\$515K	\$652K	\$620K	\$749K	19	19	\$282	\$289	104.2%	103.1%	19	12	1.9
May '22	8	8	\$942K	\$612K	\$866K	\$709K	19	25	\$308	\$268	101.6%	101.3%	16	16	2.0

© 2025. Based on information from Garden State MLS, LLC for the period of January 2018 through April 2025. Due to MLS reporting methods and allowable reporting policy, this data is only informational and may not be completely accurate. Data maintained by the MLS may not reflect all real estate activity in the market.



CHERIE  
BERGER  
TEAM



**Cherie Berger**

cherie.berger@compass.com

M: 908.410.0931



**Steven Berger**

steven.berger@compass.com

M: 908.256.0307



**Ashley Berger-Freitas**

ashley.freitas@compass.com

M: 908.432.9818



**Karla Gary**

karla.gary@compass.com

M: 908.285.3813

Compass makes no representations or warranties, express or implied, with respect to future market conditions or prices of residential product at the time the subject property or any competitive property is complete and ready for occupancy or with respect to any report, study, finding, recommendation or other information provided by Compass herein. Moreover, no warranty, express or implied, is made or should be assumed regarding the accuracy, adequacy, completeness, legality, reliability, merchantability or fitness for a particular purpose of any information, in part or whole, contained herein. All material is presented with the understanding that Compass shall not be deemed to provide legal, accounting or other professional services. This is not intended to solicit the purchase or sale of any property. Any and all such warranties are hereby expressly disclaimed. Equal Housing Opportunity.

© Compass. All Rights Reserved. This information may not be copied, used or distributed without Compass' consent.